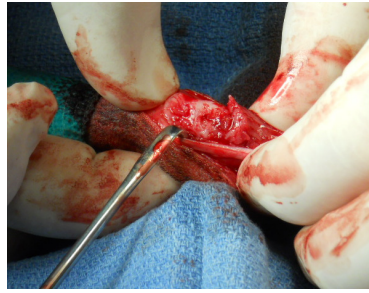


# VTS Osteoallograft Orthomix Case 1 Fracture Repair



An osteopenic mixed breed dog presented with a radius ulna fracture that occurred subsequent to two previous fractures in the same leg. Both previous repairs were done without bone graft. →

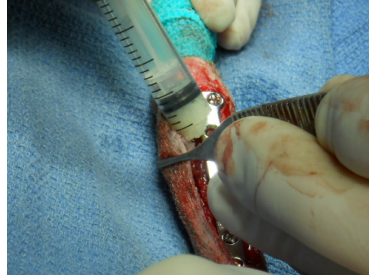


The fracture is exposed, debrided and prepared for plate placement.

Xena  
5.6 pounds  
Chihuahua mix

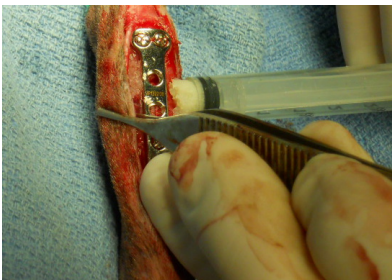


A 1.5 mm Synthes T plate is used to stabilize the fracture. →



**Osteoallograft® Orthomix® Ultra Fine** is placed on the lateral and medial sides of the fracture.

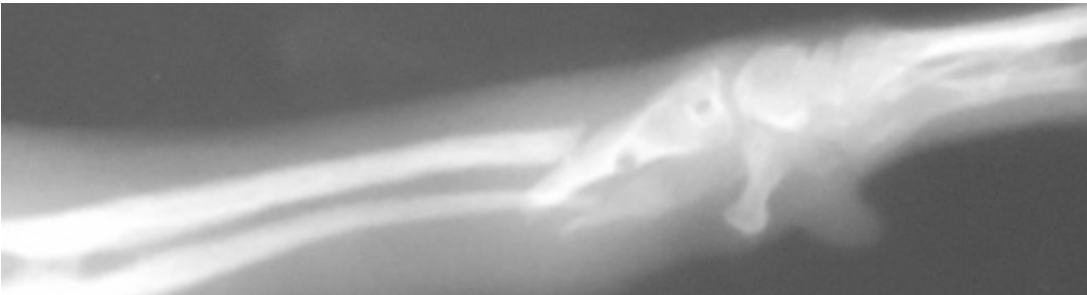
The graft may also be mixed with patient blood prior to application.



Allograft particles increase surface area and provide increased amounts of native growth factors that attract osteoprogenitor cells to facilitate healing. →

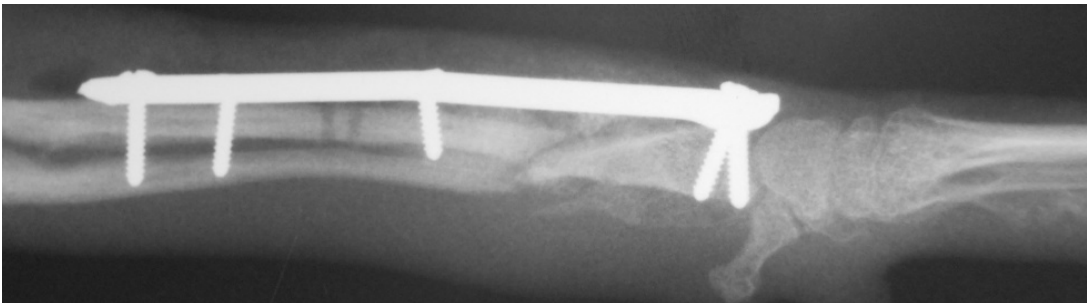


After placement of the bone allograft, the surgery site is ready for closure.



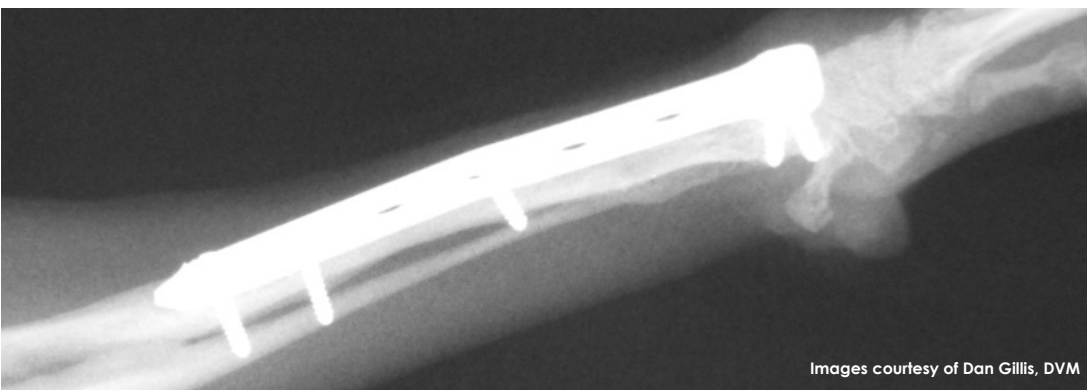
## PRE OP:

The pre-op radiograph shows the re-fractured radius and ulna.



## POST OP:

The post op radiograph shows the implant and the **Osteoallograft® Orthomix® Ultra Fine** placed around the fracture.



## 10 WEEK FOLLOW UP:

The fracture is fully healed.

Xena is weight-bearing and happy. Says Dr. Gillis, "I would highly recommend VTS bone grafts. They are easy to use and helped me tremendously with this case."

Images courtesy of Dan Gillis, DVM

# VTS Osteoallograft Orthomix Case 2

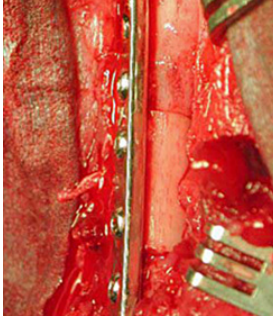
## Non-Union with Bone Loss



7 year-old Sheltie named Delenn presented with a re-fracture through a previous femoral non-union with significant bone loss.



A metacarpal segment was used to replace the resorptive section and in addition, the particulate **Osteoallograft® Orthomix®**, was used to provide enhanced access to growth factors.



The metacarpal segment is placed and secured with the plate. **Osteoallograft® Orthomix® Fine** was packed around the graft/host junctions.



### 2 WEEK FOLLOW UP:

At 2 weeks, Delenn is weight-bearing.



### 7 MONTH FOLLOW UP:

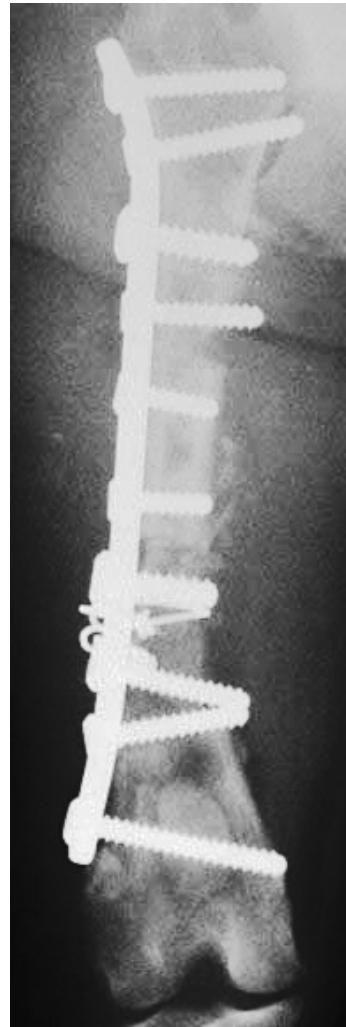
Delenn receives okay to return to agility trials.



Images courtesy of Kenneth M. Greenwood, DVM, MS, DACVS

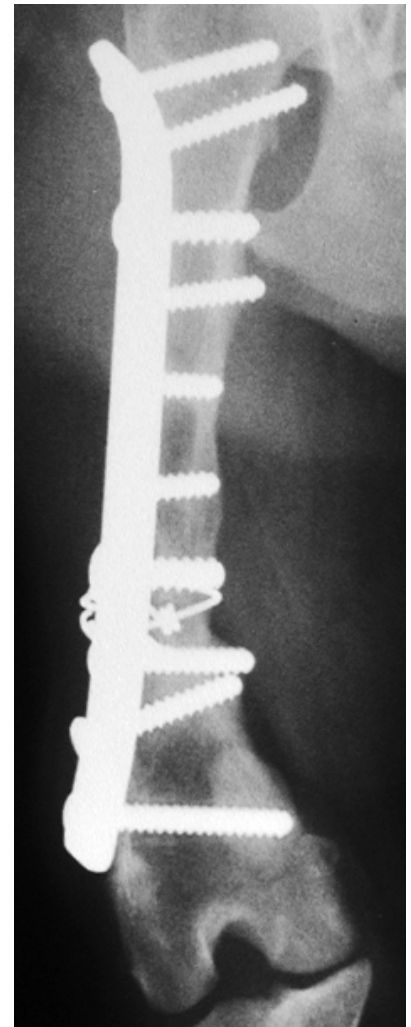
### PRE OP:

The pre op radiograph shows the extent of bone loss that occurred with this femoral non-union.



### POST OP:

The post op radiograph shows the allograft segment and the **Osteoallograft® Orthomix®** packed in place.



### 7 MONTH FOLLOW UP:

The fracture is fully healed. The allograft segment has become integrated and a continuous cortex is clearly visible.