






Soft Tissue Grafts

Tendons are used in repairing partially or fully ruptured tendons (e.g., Common Calcaneal (Achilles) tear/rupture). Frozen tendons are for canine use only.
 For Fascia grafts, see Membranes section.

Fascia & Tendons (SHELF LIFE SEE BELOW)			(FZ) ❄️ Frozen
	Flexor/Extensor Tendon	Deep digital flexor, flexor digitorum longus, miscellaneous extensors, et al. ~0.3 - 0.9 cm wide x 10 - 20 cm long (long tendons with round cross section)	CBTENFZ \$430
	Superficial Digital Flexor	Tendon includes flexors proximal & distal to calcaneus without calcaneal bone block ~0.4 - 1.2 cm wide x 6.0 - 12.0 cm long plus ~6 - 10 cm flexor length	CBTSFZ \$430
	Achilles Tendon	Common calcaneal tendon with calcaneal bone block ~0.4 - 1.5 cm wide x 7.0 - 12.0+ cm long	CBTAFZ \$430
	Patella Tendon	Bone-tendon-bone graft ~0.5 - 1.7 cm wide x ~2.5 - 5.0 cm long between bone blocks	CBTPFZ \$430

Ocular Grafts

If you wish to be notified whenever a fresh corneal graft becomes available, please let us know. For canine use only.



Fresh or Frozen Ocular Grafts			
Cornea (CANINE)	FRESH	COCORFR	\$382
	FROZEN	COCORFZ	\$264
Shelf Life: Fresh Graft - 14 days / Frozen Graft - see frozen shelf life section below			



HOW TO ORDER VTS PRODUCTS



BY PHONE

Call 800.558.5223 or 253.520.0771






ONLINE


Visit our website: www.vtsonline.com
 Order online: www.vtsonline.com/quick-order/

SHIPPING



NOW OFFERING FREE GROUND SHIPPING
ON ALL ORDERS OF 3+ FREEZE-DRIED GRAFTS!

	Freeze-Dried	Ground (USPS or FedEx)	FREE (3+ Freeze-Dried Grafts)
		Ground (USPS or FedEx)	\$15.00
		2-Day*	\$35.00
		Overnight*	\$55.00
	Refrigerated and Frozen	Overnight only*	VTS Discounted FedEx Rate (3 GRAFT MINIMUM FOR FROZEN ORTHOMIX ORDERS)
	Combo Order (Freeze-Dried plus Frozen or Refrigerated)		VTS Discounted FedEx Rate

 A Packaging Materials fee of \$25.00 is applied to all orders containing a Refrigerated or Frozen Product.
 * Make it a **PRIORITY MORNING DELIVERY** for an additional \$10.00

SHELF LIFE

Freeze-Dried Grafts

Can be stored at room temperature for **5 years**.

Synergy

Can be stored at room temperature for **5 years**.

Fusion Xpress™

Can be stored at room temperature for **2 years**.

Refrigerated Grafts

Can be stored in a refrigerator for **1 year**.

Frozen Grafts ❄️

If stored at -20°C (as in a standard household freezer), they should be used within **6 months** of receipt.

If stored at -40°C or colder, grafts can be stored for **5 years**.

Shipments are insured and traceable. **Frozen grafts must be shipped overnight on dry ice and refrigerated grafts must be shipped overnight on gel blocks.** If shipments are frozen or refrigerated, you must notify VTS if the package has not arrived by 3:00 pm on the scheduled delivery day, so we may assist in trying to ensure grafts do not thaw before delivery.

An invoice will be included with the package or, if you request, the invoice can be emailed directly to your billing office.

* See our xenograft flyer for more information on using VTS bone grafts in different species.

Growth Factor Enhanced Bone Graft

Growth factor enhancements improve and amplify the healing process. These grafts are both **osteoconductive** and **osteoinductive**. Use where enhanced bone healing is needed.

GEM Vet™ (up to 710 micron particle size)

Refrigerated

GEM Vet is a recombinant human platelet derived growth factor (rhPDGF-BB) Enhanced Bone Graft that harnesses the combined power of PDGF and allograft.



- A powerful combination of rhPDGF-BB and natural bone graft
- PDGF is one of the first growth factors involved in healing
- Real Bone is an ideal bioactive graft material
- rhPDGF-BB + Bone Graft amplifies the healing process
- Canine source*
- 1 yr shelf life; store in fridge

KIT	GEMVET0.5	\$475
0.5 cc Orthomix Ultra Fine with 0.5 cc rhPDGF		

Fortigen™-P Augmented Bone Graft (up to 710 micron particle size)

Freeze-Dried

Fortigen is a novel version of Orthomix Ultra Fine with **engineered** surface-modifications similar to BMP-2.



- ENHANCED Osteoinductivity
- Robust bone healing
- Canine or equine source*
- 5 yr shelf life; store at room temp
- Patent No. 11,565,025 B1

0.5 cc	FORTPFD0.5	\$193
1 cc	FORTPFD1	\$334
2.5 cc	FORTPFD2.5	\$628

Osteoallograft® - 100% Natural Bone Allograft

Osteoallograft is 100% natural real bone graft consisting of **osteoinductive** Demineralized Bone Matrix (DBM) and **osteoconductive** Cancellous Chips. It is biocompatible and completely incorporates with the patient's own bone.

Orthomix Ultra Fine (up to 710 micron particle size)

Freeze-Dried



- Classic product of choice
- Ultra Fine particle size fits in the tiniest of spaces
- Provides greatest surface area for exposure of intrinsic growth factors
- Canine source*
- 5 yr shelf life; store at room temp

0.5 cc	CBOUFFD0.5	\$114
1 cc	CBOUFFD1	\$219

Orthomix Fine (up to 2360 micron particle size)

(FD) Freeze-Dried

(FZ) ❄️ Frozen

(3 GRAFT MINIMUM FOR FROZEN ORTHOMIX)



- Classic product of choice
- Filling, bridging and/or reconstruction of bony defects
- Canine source*
- See back page for shelf life

1 cc	CBOFFD1	\$219	CBOFFZ1	\$151
2 cc	CBOFFD2	\$332	CBOFFZ2	\$238
3 cc	CBOFFD3	\$486	CBOFFZ3	\$329
4 cc	-		CBOFFZ4	\$407
5 cc	-		CBOFFZ5	\$481

Injectable Bone Putty

Fusion Xpress is a combination of Orthomix, biphasic β -Tricalcium Phosphate (β -TCP) and Hydroxyapatite (HA) in a resorbable carrier leaving the bone particle.

Fusion Xpress™



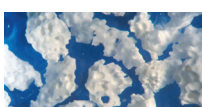
- 90:10 bone to synthetic ratio in a reverse phase carrier medium
- Expressible, moldable, and firm at body temperature
- Firm putty withstands irrigation; graft stays in place
- Convenient delivery, especially in difficult to reach areas
- Fully resorbable and biocompatible putty carrier
- Equine source*
- 2 yr shelf life; store at room temp

0.5 cc	FXBP0.5cc	\$78
1 cc	FXBP1cc	\$114
2.5 cc	FXBP2.5cc	\$181

Pure Synthetic Bone Graft

Synergy is an advanced biosynthetic bone graft made of β -Tricalcium Phosphate (β -TCP) and Hydroxyapatite (HA), both occurring naturally in bone.

Synergy™ - Ortho



- Affordable and effective biosynthetic bone graft
- Resorbed and replaced by patient's own bone
- Osteoconductive scaffold
- Economically extend any graft
- 5 yr shelf life; store at room temp

Peel Pack Vials	5 cc (5 x 1 cc doses)	SO5x1cc	\$173
-----------------	-----------------------	---------	-------

Osteoallograft® - 100% Natural Bone Allograft

Osteoallograft is 100% natural real bone graft consisting of **osteoinductive** Demineralized Bone Matrix (DBM) and **osteoconductive** Cancellous Chips. It is biocompatible and completely incorporates with the patient's own bone.

Periomix®

(up to 710 micron particle size)

Freeze-Dried



- Classic product of choice
- Ultra Fine particle size fits in the tiniest of spaces
- Provides greatest surface area for exposure of intrinsic growth factors
- Canine source*
- 5 yr shelf life; store at room temp

0.3 cc	CBPFD0.3	\$78
0.5 cc	CBPFD0.5	\$114
3 cc	CBPFD3.0	\$486

Injectable Bone Putty

Fusion Xpress is a combination of Orthomix, biphasic β -Tricalcium Phosphate (β -TCP) and Hydroxyapatite (HA) in a resorbable carrier leaving the bone particles.

Fusion Xpress™



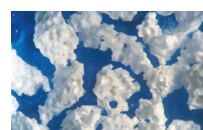
- 90:10 bone to synthetic ratio in a reverse phase carrier medium
- Expressible, moldable, and firm at body temperature
- Firm putty withstands irrigation; graft stays in place
- Convenient delivery, especially in difficult to reach areas
- Fully resorbable and biocompatible putty carrier
- Equine source*
- 2 yr shelf life; store at room temp

0.5 cc	FXBP0.5cc	\$78
1 cc	FXBP1cc	\$114
2.5 cc	FXBP2.5cc	\$181

Pure Synthetic Bone Graft

Synergy is an advanced biosynthetic bone graft made of β -Tricalcium Phosphate (β -TCP) and Hydroxyapatite (HA), both occurring naturally in bone.

Synergy™ - Dental



- Affordable and effective biosynthetic bone graft
- Resorbed and replaced by patient's own bone
- Osteoconductive scaffold
- Economically extend any graft
- 5 yr shelf life; store at room temp

Mini-vials	4 cc	(8 x 0.5 cc doses)	SD8x0.5cc	\$167
Pro-vials	15 cc	(3 x 5 cc doses)	SD3x5cc	\$359
Trial Packs	1.0 cc	(2 x 0.5 cc)	SDtrial2x0.5cc	\$58

>> See also Growth Factor Enhanced products for complex craniomaxillofacial or dental cases <<

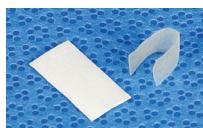
>> See also Pressfit™ and Cancellous Block sections for ideal, solid void fillers for oro-nasal fistula repair and growth factor scaffolds <<

MEMBRANES (ideal for Orthopedic, Neurosurgical and Dental procedures)

Membranes Membranes are biological materials used for Guided Tissue Regeneration. Fully biocompatible and resorbable. No removal necessary.

Ossiflex™ Bone Membranes

Freeze-Dried



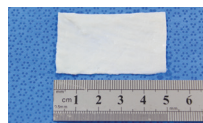
- Thin, flexible, demineralized bone sheets
- Avoids premature epithelial/fibroblast growth into areas of bone healing
- Easy to cut and bend to fit
- Can tack into place with mattress sutures
- 100% real bone
- Canine (CB) or equine (EB) source*
- 5 yr shelf life; store at room temp

Size 1	1.0 x 1.0 cm	EB or CBOXFD1	\$54
Size 2	1.0 x 1.5 cm	EB or CBOXFD2	\$89
Size 3	1.5 x 2.0 cm	EB or CBOXFD3	\$163
Size 3L	1.5 x 4.0 cm	EB or CBOXFD3L	\$307
Size 4*	2.0 x 3.0 cm	EB or CBOXFD4	\$360
Size 5*	3.0 x 3.5 cm	EBOXFD5	\$462

* Limited Availability

Fascia

Freeze-Dried

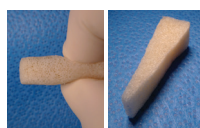


Fascia can be used wherever biological patch or barrier material is needed (e.g., dura, pericardium, hernia repair, GTR).

- Biological patch or barrier material (dura, pericardium, etc.)
- Natural collagen scaffold that allows for integration with host tissues
- Protects and supports delicate tissues to facilitate healing
- Easy to use; thin and flexible
- Canine source*
- 5 yr shelf life; store at room temp

2.0 x 3.0 cm sheet (~6 cm ²)	CBFLFD2X3	\$187
3.0 x 5.0 cm sheet (~15 cm ²)	CBFLFD3X5	\$313

Pressfit™ Blocks & Wedges Demineralized, fully compressible cancellous bone. Natural collagen for an ideal filler and/or carrier matrix.

Pressfit™ Blocks & Osteotomy Wedges
Fully Demineralized, Freeze-Dried


Compressible Bone Collagen

Pressfit™ Blocks & Wedges; used for:

- Carrier sponge for cells & biologics, like BMPs
- Natural scaffold
- Cyst or other void filling
- Occluding ONF's
- Osteotomies
- Canine (CB) or equine (EB) source*
- 5 yr shelf life; store at room temp

Small Block	0.6 x 0.6 x 2.0 cm	CB or EBBCANFDDMN-sm	\$78	(FD)
Medium Block	1.0 x 1.0 x 3.0 cm	CB or EBBCANFDDMN-med	\$207	(FD)
Medium Wedge	0.5 x 0.8 at top x 2.5 cm long	CB or EBWCANFDDMN-med	\$98	(FD)
Large Wedge	0.9 x 1.2 at top x 3.0 cm long	CB or EBWCANFDDMN-lg	\$152	(FD)

All measurements are minimum dimensions.

If your case has specific dimensional requirements please call VTS.

Cancellous Blocks Mineralized cancellous bone for spinal fusion, or void filling. Rigid graft can be shaped with saw or rongeur.

Cancellous Blocks
Surface-Demineralized, Freeze-Dried

Blocks made of dense cancellous bone; used for:

- Filling ONF's that have retained tooth
- Bridging gaps
- Filling voids & extraction sites
- Opposing tooth drift
- Canine (CB) or equine (EB) source*
- 5 yr shelf life; store at room temp

Mini	0.5 x 0.5 x 0.8 cm (±0.2 per dim.)	CBBCANFDMN	\$59	(FD)
Small	1.0 x 1.0 x 1.5 cm (±0.5 per dim.)	CB or EBBCANFDSM	\$212	(FD)
Large	1.0 x 1.5 x 2.5 cm (±0.5 per dim.)	CB or EBBCANFDLG	\$368	(FD)
Extra Large	1.0 x 2.0 x 3.0 cm (±0.2 per dim.)	EBBCANFDXL	\$490	(FD)

If your case has specific dimensional requirements please call VTS.

Segments & Struts Cortical bone graft for intercalary implantation. Surfaced demineralized to promote fusion to host bone.

Cortical Segments
Surface-Demineralized, (FZ) ❄️ Frozen

Segments made of cortical bone, used for:

- Spinal fusions
- Mandibular Resection Repair
- Bridging bone
- Lengthening bone
- Canine source*
- See back page for frozen shelf life

Femur, tibia or radius ring sections ~ 1.4 – 2.4 cm diameter

Short (Bergman Blocks)	~1.3 - 2.2 cm length	CBSHSEGFZSH	\$335	(FZ)
Medium	~2.3 - 3.4 cm length	CBSHSEGFZM	\$376	(FZ)
Long	~3.5 - 5.0 cm length	CBSHSEGFZLG	\$413	(FZ)

For even longer lengths of cortical bone shafts see.... Shaft Sections

Cortical Struts
Surface-Demineralized, (FD) Freeze-Dried / (FZ) ❄️ Frozen

Struts made of cortical bone, used for:

- Buttressing
- Augmenting bone stock
- Stabilization
- Canine source*
- See back page for frozen shelf life

*Mini	~0.2 x 0.2 cm x 2.0 cm	CBSTRFDMN	\$58	(FD)
Standard	~0.5 - 1.0 cm x 3.0 - 6.0 cm	CBSTRFZ	\$218	(FZ)
Large	~1.5 - 2.0 cm x 5.0 - 8.0 cm	CBSTRFZLG	\$285	(FZ)

* Intramedullary stabilizing pin for tiny breed long bone fractures.

Whole Bones & Shaft Sections & Allografts Full-length diaphyseal bones and shaft sections.

Whole Bone & Shaft Sections
Surface-Demineralized, (FD) Freeze-Dried / (FZ) ❄️ Frozen

Used for:

- Limb sparing
- Segment replacement

To facilitate matching of grafts for particular patients, we have direct measurements of AP and Lateral widths at mid-shaft and overall length. Please call to discuss sizing details.

- Canine source*
- See back page for frozen shelf life

Whole Long Bone	Radius, shaft & both physes	CBSHW/HFZ	\$1973	(FZ)
Shaft Section	Diaphyseal shaft sections, a minimum of 5.0 cm length, various diameters			
	Radius, Ulna, Humerus, Femur, Tibia	CBSHSCNFZ	\$913	(FZ)
	Metatarsal / Metacarpal	CBSHMETFD	\$470	(FD)
		CBSHMETFZ	\$380	(FZ)

Antibiotic Soak Kit Designed to make it easy to aseptically load bone graft with antibiotics of your choice.

Antibiotic Soak Kit


- Bone graft can elute antibiotics into a site over time.
- Easy to use kit for exposing bone graft to antibiotics prior to surgery.
- See References & How-To Video in the Product Information section at www.vtsonline.com
- 2 yr shelf life; store at room temp

KIT-1 **\$61**