

Ossiflex Closes Riley's Oronasal Fistula

Riley was referred with an oronasal fistula (ONF) and purulent discharge secondary to the surgical extraction of her maxillary canine tooth.

An Ossiflex Bone Membrane was used to cover the large bony defect. Securing the Ossiflex with a couple sutures ensured the membrane remained in place following flap apposition, as the surrounding tissue heals.

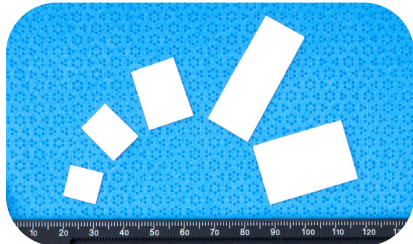


RILEY
8 Year Old
Dachshund

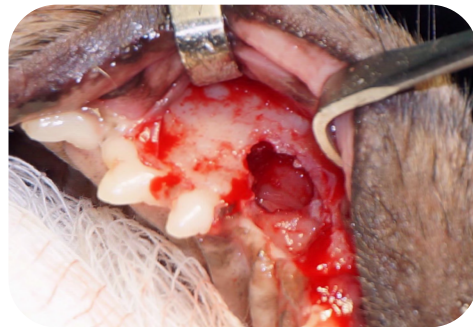


PRE-OP

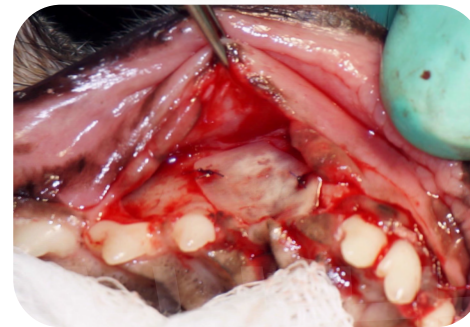
Ossiflex is a demineralized cortical bone sheet, ready to cover your largest bony defects!



Available in five sizes; thin enough to cut and suture, yet strong enough to resist pressure and provide an immobile substrate for bone and soft tissue regeneration.



INTRA-OP



INTRA-OP



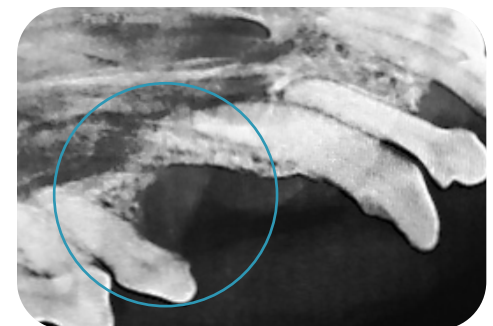
INTRA-OP



IMMEDIATE POST-OP



7 MONTH FOLLOW UP



7 MONTH FOLLOW UP

At seven months post-op, the soft tissue overing the site is solid and firm to the touch, and the "bridge" of new bone can be seen radiographically over what was previously a large, bony defect.