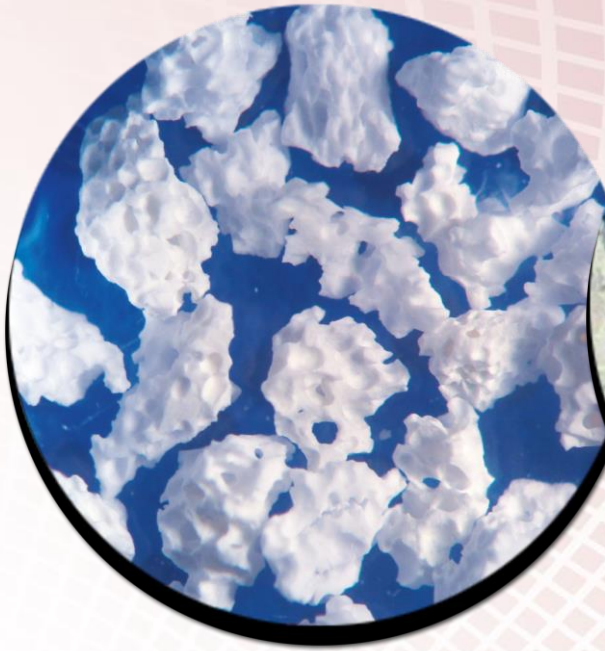


# Synergy

## The Next Generation Synthetic Bone Graft



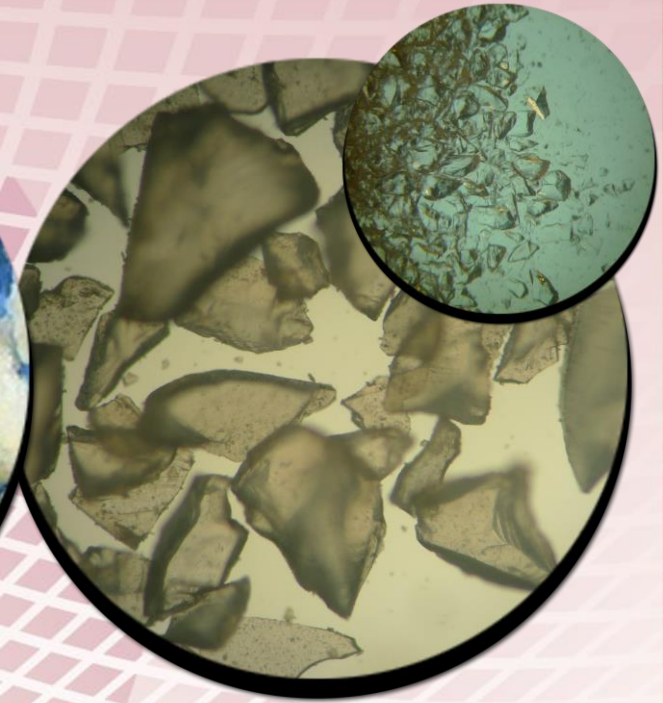
**Synergy**

**Biphasic Calcium Phosphate**



**Cancellous\* Bone Graft**

\*Same as patient's own bone



**Bioglass**

Manufactured by:



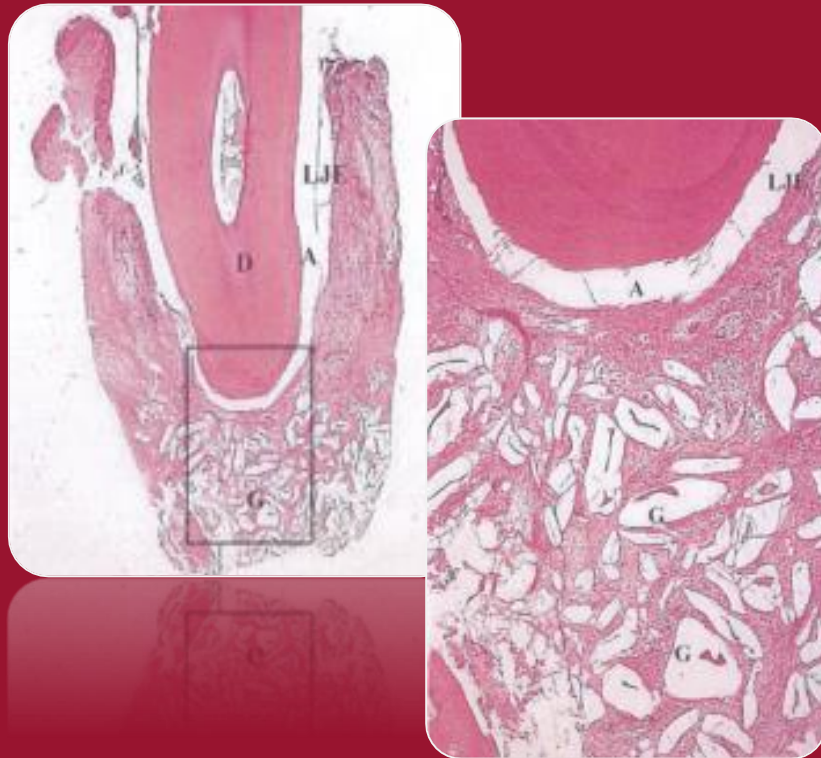
The Bone Graft Experts  
VETERINARY TRANSPLANT SERVICES, INC.

**Does your synthetic bone graft  
look like Cancellous\* Bone?**



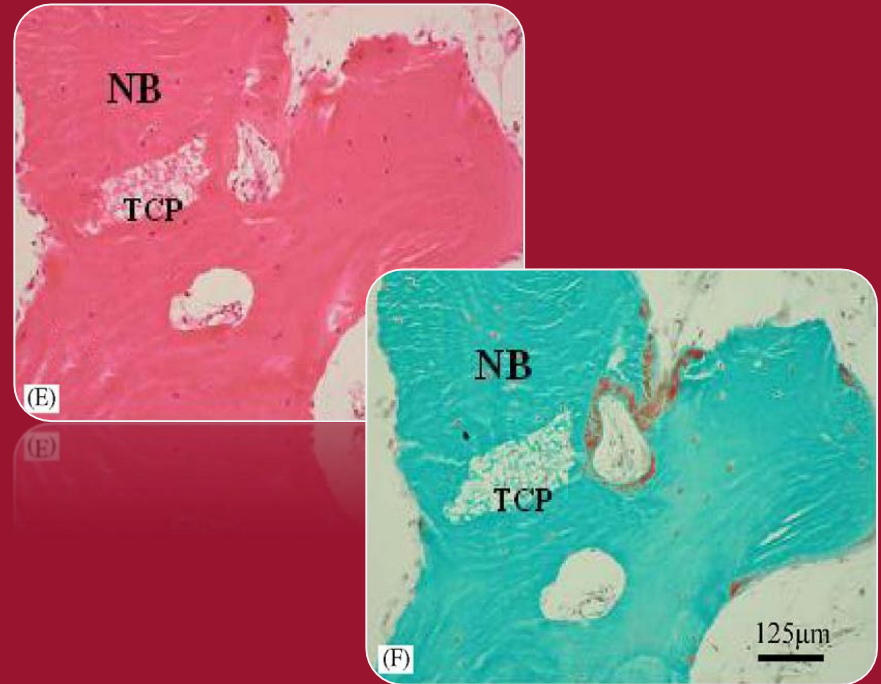
# Histology Speaks for Itself

## Treatment using Bioactive Glass



- A long epithelium (LJE) has developed along the debrided root surface .
- There is NO evidence for periodontal regeneration.
- The bioglass (G) particles are encapsulated in connective tissue. (H & E stain)

## Treatment using Calcium Phosphate Synthetic



- The end result of this process is normal looking bone (NB).
- $\beta$ -TCP is almost completely incorporated into new vital bone. (H & E and Goldner stains).